

# Kegel Sport Boardwalk



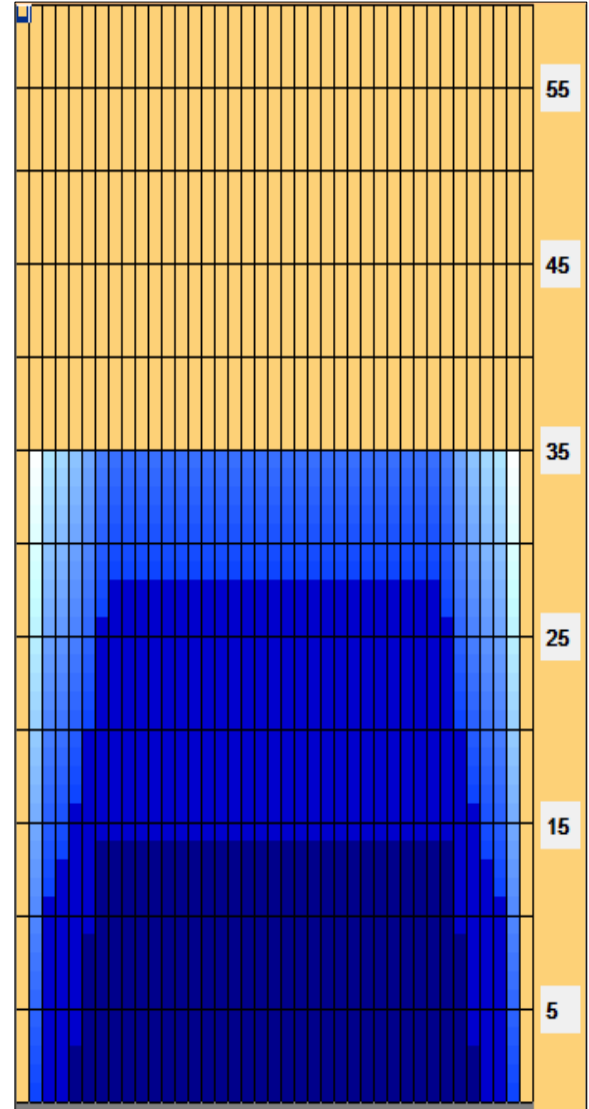
<b>Oil Pattern Distance:</b>	<b>35 Feet</b>	<b>Reverse Brush Drop:</b>	<b>35 Feet</b>	<b>Oil Per Board:</b>	<b>50 uL</b>
<b>Forward Oil Total:</b>	<b>10.55 mL</b>	<b>Reverse Oil Total:</b>	<b>13.35 mL</b>	<b>Volume Oil Total:</b>	<b>23.9 mL</b>
<b>Forward Boards Crossed:</b>	<b>211 Boards</b>	<b>Reverse Boards Crossed:</b>	<b>267 Boards</b>	<b>Total Boards Crossed:</b>	<b>478 Boards</b>

	Start	Stop	Loads	Speed	Crossed	Start	End	Feet	T.Oil
1	2L	2R	1	14	37	0.0	0.0	0.0	1850
2	5L	5R	2	14	62	0.0	3.9	3.9	3100
3	6L	6R	2	18	58	3.9	9.0	5.1	2900
4	7L	7R	2	18	54	9.0	14.1	5.1	2700
5	2L	2R	0	22	0	14.1	26.0	11.9	0
6	2L	2R	0	26	0	26.0	35.0	9.0	0

Conditioner: Fire  
TransferType: Transfer Roller

Forward  
Reverse  
Combined  
Buff

	Start	Stop	Loads	Speed	Crossed	Start	End	Feet	T.Oil
1	2L	2R	0	30	0	35.0	28.0	-7.0	0
2	8L	8R	1	18	25	28.0	25.5	-2.5	1250
3	7L	7R	2	18	54	25.5	20.4	-5.1	2700
4	6L	6R	2	14	58	20.4	16.5	-3.9	2900
5	5L	5R	2	14	62	16.5	12.6	-3.9	3100
6	4L	4R	1	14	33	12.6	10.7	-1.9	1650
7	3L	3R	1	14	35	10.7	8.8	-1.9	1750
8	2L	2R	0	14	0	8.8	0.0	-8.8	0



**BOARDWALK - 2435** Based upon the 2000 PBA Indianapolis Open pattern which was created by Kegel, this pattern is designed to play towards the edge board. Because of the relatively short 35 foot length of the BOARDWALK, players will need to control the excessive change of direction of the bowling ball as it enters the 25 feet of dry backend. Since lanes do have many topographical differences, on some lanes the BOARDWALK will require a more direct route to the pocket while other lane characteristics may allow players to swing the ball to the edge board. Like all wooden walkways, this pattern can provide great excitement but stray too far off the BOARDWALK

Item	3L-7L:18L-18R	8L-12L:18L-18R	13L-17L:18L-18R	18L-18R:17R-13R	18L-18R:12R-8R	18L-18R:7R-3R
Description	Outside Track:Middle	Middle Track:Middle	Inside Track:Middle	Middle: Inside Track	Middle:Middle Track	Middle:Outside Track
Track Zone Ratio	2.11	1	1	1	1	2.11

