

# STORM Prague Bowling Cup, 8. turnaj



<b>Oil Pattern Distance:</b>	<b>35 Feet</b>	<b>Reverse Brush Drop:</b>	<b>35 Feet</b>	<b>Oil Per Board:</b>	<b>40 uL</b>
<b>Forward Oil Total:</b>	<b>10.68 mL</b>	<b>Reverse Oil Total:</b>	<b>13.4 mL</b>	<b>Volume Oil Total:</b>	<b>24.08 mL</b>
<b>Forward Boards Crossed:</b>	<b>267 Boards</b>	<b>Reverse Boards Crossed:</b>	<b>335 Boards</b>	<b>Total Boards Crossed:</b>	<b>602 Boards</b>

	Start	Stop	Loads	Speed	Crossed	Start	End	Feet	T.Oil
1	2L	2R	1	14	37	0.0	0.0	0.0	1480
2	5L	5R	2	14	62	0.0	3.9	3.9	2480
3	6L	6R	3	18	87	3.9	11.5	7.6	3480
4	7L	7R	3	18	81	11.5	19.1	7.6	3240
5	2L	2R	0	18	0	19.1	23.0	3.9	0
6	2L	2R	0	22	0	23.0	28.0	5.0	0
7	2L	2R	0	26	0	28.0	35.0	7.0	0

Navigation: Forward Reverse More

	Start	Stop	Loads	Speed	Crossed	Start	End	Feet	T.Oil
1	2L	2R	0	30	0	35.0	30.0	-5.0	0
2	8L	8R	1	18	25	30.0	27.5	-2.5	1000
3	7L	7R	2	18	54	27.5	22.4	-5.1	2160
4	6L	6R	2	14	58	22.4	18.5	-3.9	2320
5	5L	5R	3	14	93	18.5	12.6	-5.9	3720
6	4L	4R	1	14	33	12.6	10.7	-1.9	1320
7	3L	3R	1	14	35	10.7	8.8	-1.9	1400
8	2L	2R	1	10	37	8.8	7.4	-1.4	1480
9	2L	2R	0	10	0	7.4	0.0	-7.4	0

Navigation: Forward Reverse More

Conditioner:  
FIRE

TransferType:  
Transfer Roller

Forward



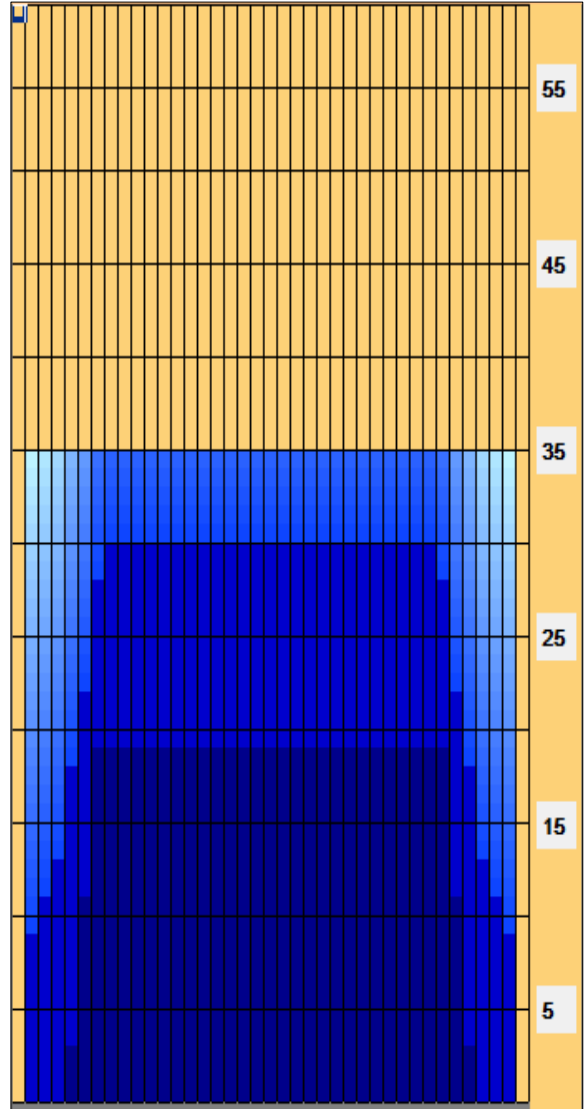
Reverse



Combined



Buff



Item	3L-7L:18L-18R	8L-12L:18L-18R	13L-17L:18L-18R	18L-18R:17R-13R	18L-18R:12R-8R	18L-18R:7R-3R
Description	Outside Track:Middle	Middle Track:Middle	Inside Track:Middle	Middle:Inside Track	Middle:Middle Track	Middle:Outside Track
Track Zone Ratio	2.04	1	1	1	1	2.04

